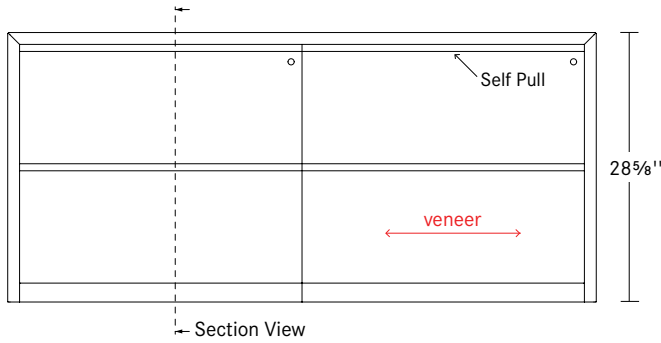


a.k.a. mitered credenzas

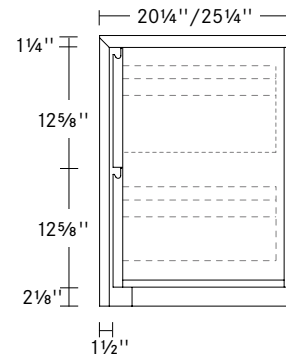
february 2019 price list

index	2
collection overview	3
materials/finishes	4
assembled credenzas 20¼"d	
standard height assembled credenzas	5
serving height assembled credenzas	6
assembled credenzas 25¼"d	
standard height assembled credenzas	7
standard height av/refrigerator assembled credenzas	8
serving height assembled credenzas	9
serving height av/refrigerator assembled credenzas	10
av rotating/slideout equipment rack	11
guaranteed freight	12
terms and conditions	13-14

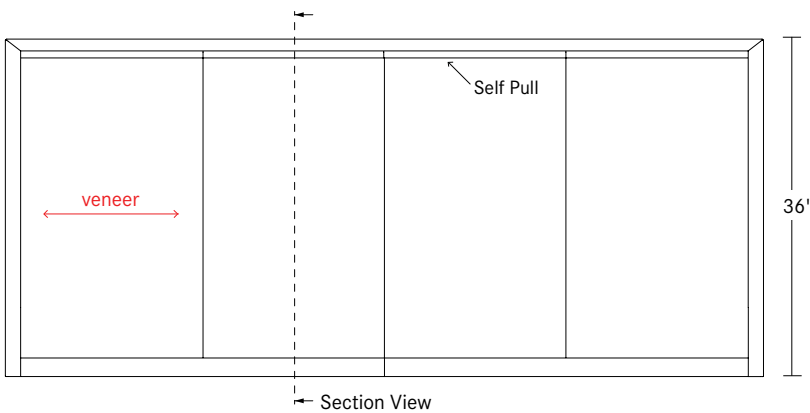
A.K.A. Mitered Credenzas



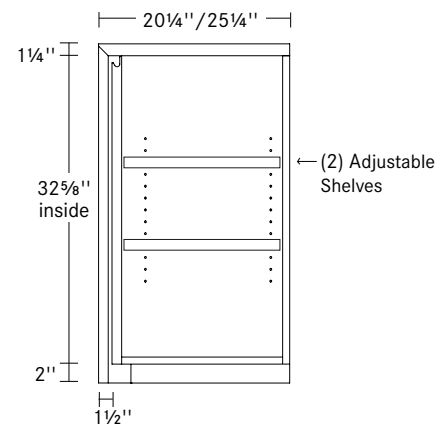
Front View/Standard Height



Section View/Standard Height



Front View/Serving Height

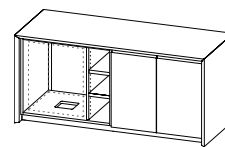


Section View/Serving Height

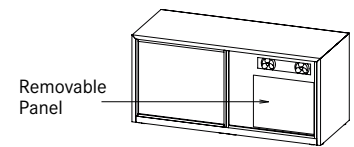
AV/Refrigerator Credenza

The A.K.A. av/refrigerator credenzas are designed to accommodate refrigeration needs and audiovisual equipment use and storage. Each av/refrigerator credenza comes standard with a removable, thermal sensor cooling fan installed. AV rotating/slideout equipment racks are available for installation, allowing for more flexibility and usage of space.

Refrigerators are not available for purchase from Bernhardt Design and must be purchased separately.



Front View
AV/Refrigerator Credenza



Back View
Showing Removeable Back Panel

AV Rotating/Slideout Equipment Rack

Rack max weight capacity: 200 lbs.

Rail System: 19" overall depth, 38" extended

AV rack must be screwed to the bottom of the case when installed.

Standard Height:

12 usable rack spaces

Usable Depth: 15 1/2"

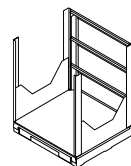
Usable Width: 18 1/2"

Serving Height:

14 usable rack spaces

Usable Depth: 15 1/2"

Usable Width: 18 1/2"



Front View
AV Rotating/Slideout Equipment Rack

Laminates

Laminate Selections



FL 1¼" Flat Edge

A three character sku identifies each laminate selection as well as the standard finish offered. Individual components are priced with standard finish on standard laminate.

A variety of Wilsonart® standard laminates with standard finishes are offered on conference and multipurpose tables. Additional colors may be available but are subject to upcharges and extended lead times. The laminate option is available on components where noted as an option in the material specification code.

All laminate tops will have a 3mm matching edge band.

Standard Laminates

- PLL** Solid Laminate
- 671** Designer White, Wilsonart D354-60 Matte Finish
- 672** Frosty White, Wilsonart 1573-60 Matte Finish
- 673** Fashion Grey, Wilsonart D381-60 Matte Finish
- 674** North Sea, Wilsonart D90-60 Matte Finish
- 675** Black, Wilsonart 1595-60 Matte Finish
- WGL** Woodgrain Laminate
- 678** New Age Oak, Wilsonart 7938-16 Soft Grain Finish
- 679** Brazilwood, Wilsonart 7946-38 Matte Finish
- 680** Walnut Heights, Wilsonart 7965K-12 Soft Grain Finish
- 681** Studio Teak, Wilsonart 7960-16 Soft Grain Finish
- 682** Asian Night, Wilsonart 7949-16 Soft Grain Finish
- 683** Portico Teak (Grey), Wilsonart 8210K-28 Gloss Line Finish

Veneers

Veneer Selections



FL 1¼" Flat Edge

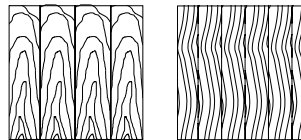
A three character sku identifies each species as well as the standard finish offered. Individual components are priced with standard finish. Special finishes on veneers made to customer specifications are subject to factory approval and a 5% net upcharge with a \$500 net minimum.

Transparent stains and sealers are applied in multiple steps to enhance the beauty of the natural wood. A durable, baked-on, top-coat of conversion varnish or UV topcoat is applied to protect the product. It is recommended that felt, cork or fabric backed desk pads and accessories are used on tops to minimize wear.

When specifying light finishes such as 836, 837, 840, 850 or 870, the color and characteristic variances of both veneer and solid wood are apparent. Therefore, exact color matches are not possible.

Tops/Pedestals

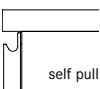
- CHY** Cherry
- MPL** Maple
- WLT** Walnut
- OAK** Oak
- PLD** Paldao
- Flat Cut
- Rift/Quarter Cut



Standard Finishes

CHY Cherry	WLT Walnut	OAK Oak	MPL Maple	PLD Paldao
805	823	805 865	837	823 861
834	839	836 866	850	839 866
836	841	837 870		841 870
839	860	839		860
840	861	840		
841	866	860		
861	870	861		

Pull/Hardware Selections



SF Self Pull

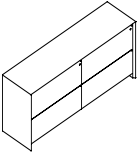
**standard height
assembled credenzas 20¼"d**



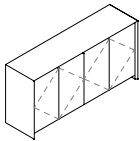
standard height assembled credenzas 20¼"d

freestanding assembled credenza
tops included

description	sku	w	d	h	specifications	CHY	MPL	OAK	WLT	PLD	paldao
						cherry	maple	oak	walnut		
standard height assembled credenzas	1HO	62½	20¼	28⅝	(2) 30" FF; 2 locks	\$ 5720				\$ 6636	
	1HS	74½	20¼	28⅝	(2) 36" FF; 2 locks	5803				6732	
file/file mitered top and ends bevel edge detail on front self pull only	1HW	92½	20¼	28⅝	(3) 30" FF; 3 locks	7621				8841	
	1HY	110½	20¼	28⅝	(3) 36" FF; 3 locks	7749				8989	



standard height assembled credenzas	1IO	62½	20¼	28⅝	(2) 30" DD; no locks	5152				5977	
	1IS	74½	20¼	28⅝	(2) 36" DD; no locks	5231				6068	
hinged doors 1 adjustable shelf mitered top and ends bevel edge detail on front self pull only	1IW	92½	20¼	28⅝	(3) 30" DD; no locks	6777				7862	
	1IY	110½	20¼	28⅝	(3) 36" DD; no locks	6889				7992	



specification codes example: AKS-SKU-SF

series	sku	pull
a.k.a.		SF self pull
A K S -	-	S F

material/finish code example: WLT 839

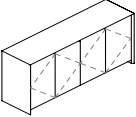
material	finish
CHY cherry	see page 4
MPL maple	
OAK oak	
WLT walnut	
PLD paldao	

**servicing height
assembled credenzas 20¼"d**



servicing height assembled credenzas 20¼"d

freestanding assembled credenza
tops included

description	sku	w	d	h	specifications	CHY	MPL	OAK	WLT	PLD	paldao
						cherry	maple	oak	walnut		
 <p>servicing height assembled credenzas</p> <p>hinged doors 2 adjustable shelves mitered top and ends bevel edge detail on front self pull only</p>	1JO	62½	20¼	36	(2) 30" DD; no locks	\$ 6057				\$ 7027	
	1JS	74½	20¼	36	(2) 36" DD; no locks	6154				7139	
	1JW	92½	20¼	36	(3) 30" DD; no locks	7963				9238	
	1JY	110½	20¼	36	(3) 36" DD; no locks	8076				9369	

specification codes example: AKS-SKU-SF

series	sku	pull
a.k.a.		SF self pull
A K S -	-	S F

material/finish code example: WLT 839

material	finish
CHY cherry	see page 4
MPL maple	
OAK oak	
WLT walnut	
PLD paldao	

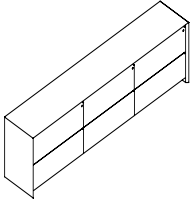
**standard height
assembled credenzas 25¼"d**



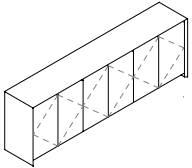
standard height assembled credenzas 25¼"d

freestanding assembled credenza
tops included

description	sku	w	d	h	specifications	CHY cherry		PLD paldao
						MPL maple	OAK oak	
						WLT walnut		
standard height assembled credenzas	1HP	62½	25¼	28⅝	(2) 30" FF; 2 locks		\$ 5787	\$ 6713
	1HT	74½	25¼	28⅝	(2) 36" FF; 2 locks		5872	6812
file/file mitered top and ends bevel edge detail on front self pull only	1HX	92½	25¼	28⅝	(3) 30" FF; 3 locks		7689	8920
	1HZ	110½	25¼	28⅝	(3) 36" FF; 3 locks		7817	9068



standard height assembled credenzas	1IP	62½	25¼	28⅝	(2) 30" DD; no locks		5220	6056
	1IT	74½	25¼	28⅝	(2) 36" DD; no locks		5298	6146
hinged doors 1 adjustable shelf mitered top and ends bevel edge detail on front self pull only	1IX	92½	25¼	28⅝	(3) 30" DD; no locks		6845	7941
	1IZ	110½	25¼	28⅝	(3) 36" DD; no locks		6957	8071



specification codes example: AKS-SKU-SF

series	sku	pull
a.k.a.		SF self pull
A K S -	-	S F

material/finish code example: WLT 839

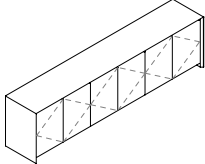
material	finish
CHY cherry	see page 4
MPL maple	
OAK oak	
WLT walnut	
PLD paldao	

**standard height
av/refrigerator assembled credenza 25 1/4" d**



**standard height av/refrigerator
assembled credenzas 25 1/4" d**

freestanding assembled credenza
tops included

description	sku	w	d	h	specifications	CHY	cherry	MPL	maple	OAK	oak	WLT	walnut	PLD	paldo		
 <p>standard height av/refrigerator assembled credenzas</p> <p>hinged doors 1 adjustable shelf mitered top and ends bevel edge detail on front self pull only</p> <p>holds 1.5 cubic foot refrigerator specify separately the ACS-VCZ equipment rack</p>																	
		IKP	62 1/2	25 1/4	28 5/8	(2) 30"								\$ 6186		\$ 7176	
	interior dimensions: 18 1/2" w x 22 7/8" h x 21" d																
		IKT	74 1/2	25 1/4	28 5/8	(2) 36" DD								6277		7282	
	interior dimensions: 20 3/4" w x 22 7/8" h x 21" d																
	IKX	92 1/2	25 1/4	28 5/8	(3) 30" DD								7812		9062		
interior dimensions: 18 1/2" w x 29 7/8" h x 21" d																	
	IKZ	110 1/2	25 1/4	28 5/8	(3) 36" DD								7924		9192		
interior dimensions: 20 3/4" w x 22 7/8" h x 21" d																	

specification codes example: AKS-SKU-SF

series	sku	pull
a.k.a.		SF self pull
A K S -	-	S F

material/finish code example: WLT 839

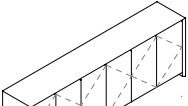
material	finish
CHY cherry	see page 4
MPL maple	
OAK oak	
WLT walnut	
PLD paldao	

**servicing height
assembled credenzas - 25¼"d**



servicing height assembled credenzas- 25¼"d

freestanding assembled credenza
tops included

description	sku	w	d	h	specifications	CHY cherry	MPL maple	OAK oak	WLT walnut	PLD paldao
 <p>servicing height assembled credenzas hinged doors 2 adjustable shelves mitered top and ends bevel edge detail on front self pull only</p>	1JP	62½	25¼	36	(2) 30" DD; no locks	\$ 6125				\$ 7105
	1JT	74½	25¼	36	(2) 36" DD; no locks		6220			7216
	1JX	92½	25¼	36	(3) 30" DD; no locks		8031			9316
	1JZ	110½	25¼	36	(3) 36" DD; no locks		8143			9446

specification codes example: AKS-SKU-SF

series	sku	pull
a.k.a.		SF self pull
A K S -	-	S F

material/finish code example: WLT 839

material	finish
CHY cherry	see page 4
MPL maple	
OAK oak	
WLT walnut	
PLD paldao	

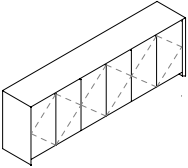
**servicing height
av/refrigerator assembled
credenza 25¼"d**



**servicing height av/refrigerator
assembled credenzas 25¼"d**

freestanding assembled credenza
tops included

description	sku	w	d	h	specifications	CHY	MPL	OAK	WLT	PLD	paldao
						cherry	maple	oak	walnut		



**servicing height av/refrigerator
assembled credenzas**

hinged doors
1 adjustable shelf
mitered top and ends
beveledge detail on front
self pull only

holds 1.7 cubic foot refrigerator
specify separately the ACS-VCY equipment rack

interior dimensions: 18½" w x 29⅞"h x 21"d	ILP	62½	25¼	36	(2) 30" DD					\$ 7092	\$ 8227
interior dimensions: 20¾" w x 29⅞"h x 21"d	ILT	74½	25¼	36	(2) 36" DD					7187	8337
interior dimensions: 18½" w x 29⅞"h x 21"d	ILX	92½	25¼	36	(3) 30" DD					8998	10438
interior dimensions: 20¾" w x 29⅞"h x 21"d	ILZ	110½	25¼	36	(3) 36" DD					9110	10568

specification codes example: AKS-SKU-SF

series	sku	pull
a.k.a.		SF self pull
A K S -	-	S F

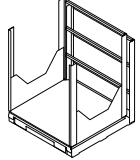
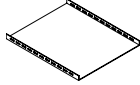
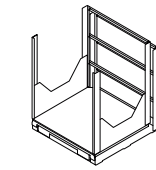
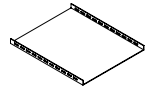
material/finish code example: WLT 839

material	finish
CHY cherry	see page 4
MPL maple	
OAK oak	
WLT walnut	
PLD paldao	

av rotating/slideout equipment rack



av rotating/slideout equipment rack

description	sku	w	d	h	specifications	price
 <p>standard height av rotating/slideout equipment rack</p> <p>use with standard height av/refrigerator pedestals telescoping depth: 16" - 26" rack max weight capacity: 200 lb. field assembled and installed specify separately the ACS-VCX av shelf</p>	VCZ	19	19-38	24	12 usable rack spaces	\$ 1965
 <p>av shelf</p> <p>sliding rail system shelf, mounts to rack rails slots for securing components with straps hardware included usable depth: 15½" usable width: 18½" specify separately the ACS-VCZ equipment rack</p>	VCX	19	16¼	1½		549
 <p>serving height av rotating/slideout equipment rack</p> <p>use with serving height av/refrigerator pedestals telescoping depth: 16" - 26" max weight capacity: 200 lb. field assembled and installed specify separately the ACS-VCX av shelf</p>	VCY	19	19-38	27½	14 usable rack spaces	\$ 2081
 <p>av shelf</p> <p>sliding rail system shelf, mounts to rack rails slots for securing components with straps hardware included usable depth: 15½" usable width: 18½" specify separately the ACS-VCY equipment rack</p>	VCW	18¾	16¼	1½		361

specification codes example: ACS-SKU

series	sku
accessory	
A C S -	

Preferred Carrier Guaranteed Freight Rates

Freight charges will be applied to orders as a separate line item based on the zones listed. Rates are based on zones with a minimum for each zone. All zones are located within the Continental United States.

The freight amount is calculated on the total merchandise net price, excluding any extra discounts beyond standard net pricing. Additional freight fuel surcharges may apply. Rates are based on deliveries made Monday through Friday, 8 am until 5 pm.

All orders are shipped by Bernhardt Design company trucks or preferred carriers specified by Bernhardt Design. If a purchase order does not specify that the product must ship complete, Bernhardt Design reserves the right to select the most effective shipping method necessary, including split shipments. Dealer warehouse information, including phone number and contact name, must be specified on the purchase order.

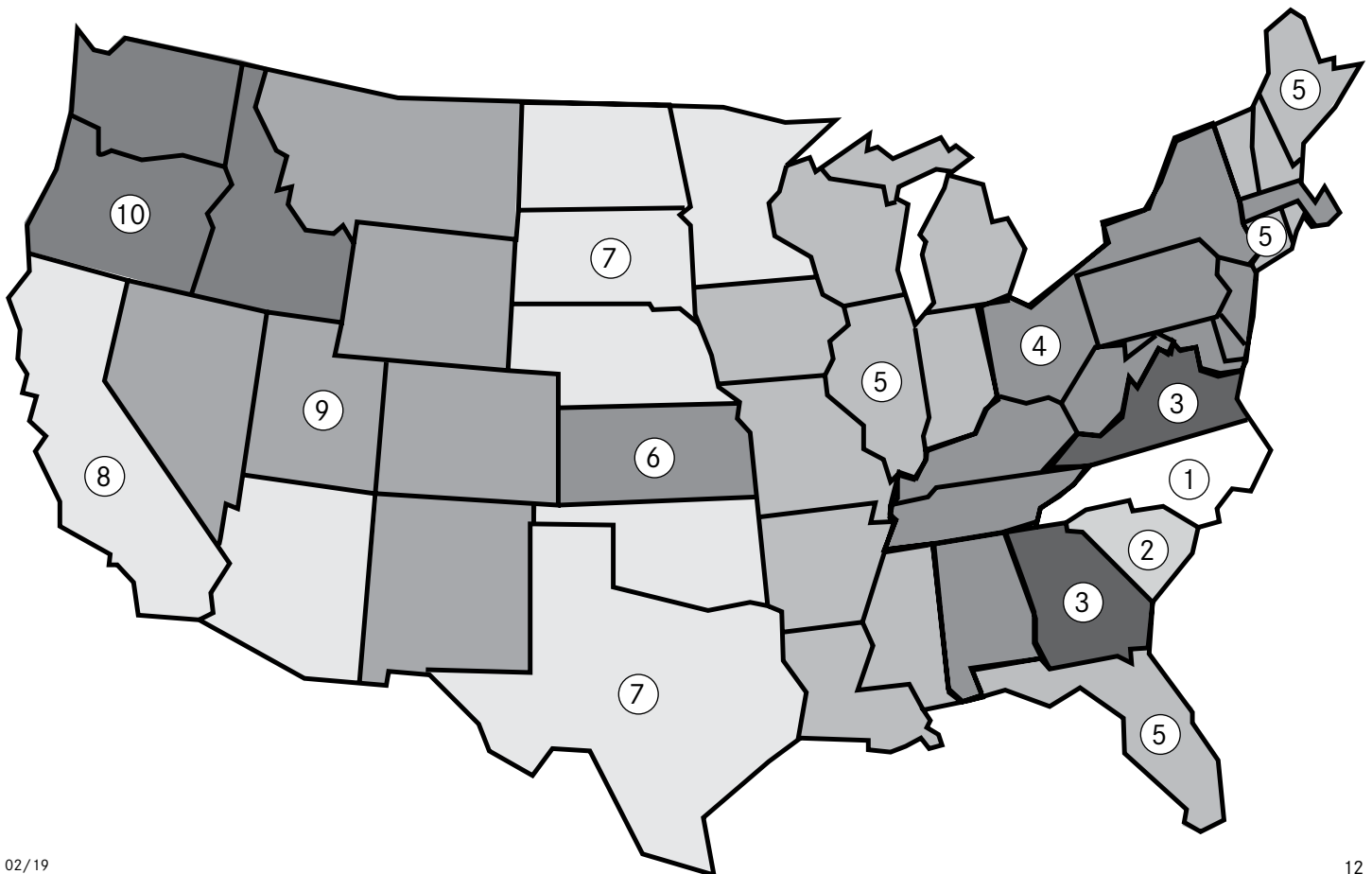
Direct site deliveries may be requested with an additional freight cost. Requests for direct site deliveries must be made 2 weeks prior to the scheduled ship week and meet the following criteria:

- Minimum of half truckload
- Delivery site accessible by a 53' trailer
- Complete delivery site address with contact name and on-site phone number
- Labor available for unloading

Deliveries that do not meet the criteria must be directed to a receiver warehouse. If a receiver warehouse is not available, the dealer may make arrangements with their own 3rd party carrier. If a 3rd party carrier is elected, a contact name, phone number and e-mail address is required.

Weekend direct site deliveries will incur a \$500 per trailer weekend delivery fee. Weekend is defined as between 5 pm Friday and 8 am Monday.

Zone	Minimum Charge	Freight Rate
1	\$80	5%
2	\$80	6%
3	\$90	7%
4	\$90	8%
5	\$90	9%
6	\$110	10%
7	\$110	11%
8	\$120	12%
9	\$120	13%
10	\$120	15%



Sales and Service Policy

Guidelines detailing the operating policies and procedures of Bernhardt Design are provided in the Sales and Service Policy available online at <http://www.bernhardtdesign.com/sales-and-service-policy>.

Prices and Specifications

Prices and specifications are subject to change without notice. All prices quoted will be FOB our factories. If applicable, sales tax will be based on ship-to destination.

Bernhardt Design reserves the right to make changes in dimensions, construction, price lists, or product literature without prior notice.

Order Entry

All orders are subject to final acceptance by Bernhardt Design in Lenoir, NC. Receipt of our acknowledgment indicates acceptance of your order subject to the terms set forth on the acknowledgment. Bernhardt Design attempts to clarify all purchase orders. However, in the event the price list number and description on the purchase order differ, the price list number will prevail.

Changes / Cancellation

All orders in production are considered firm orders and are not subject to changes or cancellation.

Custom Design

Bernhardt Design may alter products to meet specific needs. Contact your local sales representative when a custom design is needed. Custom designs require minimum quantities, additional lead time, and upcharges.

A custom job number, available from your local sales representative, must be submitted with purchase orders. Orders combining custom design with standard product cannot be scheduled for production until custom items are approved. Custom design orders are not subject to revision or cancellation after acknowledgment.

Shipping

Bernhardt Design will ship in accordance with customer instructions whenever possible. If not specified, Bernhardt Design will exercise its best judgment in selecting a carrier. When selecting a carrier, Bernhardt Design will make our best effort to meet requested delivery dates. Transportation lead-times and delays including equipment problems, weather, general traffic, traffic accidents, customer warehouse space, labor disputes, customer changes etc., that occur on a carrier will not be the responsibility of Bernhardt Design. Furthermore, Bernhardt Design will not be responsible for additional costs incurred due to aforementioned delays.

Customer orders in production will be shipped as scheduled and will not be held. Bernhardt Design reserves the right to make partial shipments on any order, unless notified otherwise by the customer.

High quality cartoning meeting trucking and railroad specifications is standard at no extra charge. Some items may be blanket wrapped for shipment.

Freight Damage and Claims

Bernhardt Design is not liable for damages that occur during transit or storage. The carrier assumes all responsibility upon acceptance of product. It is the customer's responsibility to inspect all products upon receipt and file any claims with the carrier. No product should be refused.

If products are received damaged, a written exception should be made on the bill of lading and an immediate inspection be requested of the carrier. Concealed damage must be reported to the carrier within 10

business days from date of delivery. Failure to make claims shall constitute acceptance of the products and waiver any claims of defects, errors or shortages.

In the event delivery is made on a Bernhardt Design truck, the products should be carefully inspected for transit damage. If contents are damaged, the driver should be notified to call his dispatcher for immediate disposition. Concealed damage must be reported within 10 business days from date of delivery and product/packaging held for inspection by a Bernhardt Design representative.

Replacements for product damaged in shipment or storage will be manufactured upon receipt of a purchase order.

Returns

No merchandise may be returned to Bernhardt Design without written consent in the form of a Return Authorization from our Quality Assurance Department stating why the item is being returned and how the item will be shipped.

Unauthorized returns will be automatically refused by our receiving department as well as returns not in accordance with Bernhardt Design shipping instructions. Liability for defective merchandise shall be limited to the replacement or repair of that merchandise, and Bernhardt Design shall not be liable for other damages or losses.

Measurements and Weights

All measurements and weights are approximate and subject to change without notice.

Care and Cleaning

Finished wood surfaces should be cleaned with a soft damp cloth, wiping in the direction of the grain. Furniture should be buffed dry immediately with a soft cloth.

Wood Finishes

Bernhardt Design tables are available in finishes that are compatible with casegoods and seating finishes. However, finishes on tables may vary slightly from those on casegoods and seating due to the natural characteristics of the wood. No absolute match is implied or guaranteed.

Light Finishes

Bernhardt Design offers lighter finishes 836, 837, 840, 850, and 870 on certain veneers. Light finishes do not hide or mask the natural characteristics of the wood. Therefore, inherent natural characteristics

of the wood will vary from piece to piece when using a light finish. Natural characteristics include the natural discolorations of the wood substance and color variations in glued up stock. These natural characteristics are not considered defects by Bernhardt Design, and therefore merchandise will not be replaced.

Special Finishes

Special finishes, made to customer specifications and subject to factory approval, may be available at a **5% net upcharge with a \$500 net minimum.**

Additional leadtime may be required for special finish items. Special finish orders will not be acknowledged until the special finish sample is approved in writing and received by Bernhardt Design Customer Service. Special finish orders are not subject to revision or cancellation after acknowledgment.

Installation and Maintenance

All freestanding casegoods are equipped with leveling devices. Local floor conditions vary, and it is always necessary to properly adjust leveling devices. Proper leveling is essential to the alignment and function of doors and drawers. Improperly leveled units result in misaligned doors and drawers and may impair locking mechanisms or other functional hardware.

After the initial installation of casegoods, it may be necessary to readjust and align the units to compensate for settling. This should be expected as a matter of routine maintenance and follow-up to assure proper case function.

Proper installation of Bernhardt Design casegoods is the responsibility of the dealer. Improperly installed units can result in permanent damage to case components. Damage due to improperly installed furniture not covered under product warranty.

Warranty

Bernhardt Design will repair or replace, at its discretion, any casegoods product or part thereof which fails as the result of defects in material and workmanship, under single shift use and normal care for five years. This warranty shall apply only to the original purchaser. This warranty does not cover normal wear and tear, misuse or abuse of product, dramatic temperature changes, exposure to unusual conditions or damages incurred by contact with seating products, tables, desks or other surfaces.

Natural color changes, variations or movements in lumber or veneer products, exposure to extreme temperature changes and direct sunlight may cause color changes and/or surface damage. These are circumstances beyond the control of Bernhardt Design and are not warranty issues. Repair or replacement of discontinued product will be at the discretion of Bernhardt Design.

This warranty is the customer's exclusive remedy for product defect and does not apply to damage caused by a freight carrier, dealer, installer, user modification, attachments to a product, or any third party. Bernhardt Design has the exclusive right to make the final determination of product misuse or abuse.

Except as stated above, Bernhardt Design makes no express or implied warranties as to any product, and in particular, makes no warranty of merchantability or of fitness for any particular purpose. Bernhardt Design shall not be liable for any consequential or incidental damages or for commercial loss arising from any product defect.

Operational Parts Warranty

Drawer glides, drawer boxes, drawer pulls, and lock mechanisms have a Life-Time Warranty for original purchaser. Power and communication components are warranted for one year.

Wall Mount Units Warranty

Wall mounted units are supplied with an adequate attachment device but not with hardware to attach this device to the support wall. It is the responsibility of the dealer/installer to ensure the wall structure is adequate to support the unit and that the attachment device is properly secured to the wall structure.

Design and Patent Rights

All of the products shown in Bernhardt Design catalogs and described in Bernhardt Design price lists are, and remain, the property of Bernhardt Design, with the sole right reserved to manufacture and to distribute.

Some of the product designs shown are patented in the United States and will remain the property of Bernhardt Design. Any reproduction of the products constitutes an infringement of patented copyright laws and will be subject to prosecution.

Bernhardt Design reserves the right to make changes in dimensions, design and/or construction, price lists, or product literature without prior notice.

General Services Administration

Products available on the Bernhardt Design GSA - Federal Supply Service Contract GS-27F-010GA are noted in the overview section of the product descriptions.

For information regarding GSA pricing, please contact your local Bernhardt Design sales representative or call 828.759.6337.

Send all GSA payments to:
12197 Collections Center Drive
Chicago IL 60693